

technical details IC1 series

Basic Devices
(IC1-1300mm, 4 ft)



	weight	Heatinglines	working length	Netz	Fuse
IC1-1300mm 4 ft	51kg	4	1300mm	210V-230V 50/60Hz 1200W	Fuse 5x20 6,3AT
IC1-2020mm 6,2 ft	84kg	4	2020mm	210V-230V 50/60Hz 3440W	Fuse 5x20 8AT

Detachable end stop from 12 to 300 mm
Digital power display 0..100%
Temperature is infinitely adjustable
Heating wire is adjustable from - 8 to 20 mm
User manual

Packing 12mm OSB woodbox				
IC1-1300	Ca. 60kg	1324mm	830mm	940mm
IC1-2020	Ca. 80Kg	2220mm	830mm	940mm

Work areal		
IC1-1300	820mm	1300mm
IC1-2020	820mm	2020mm

Distans between bendings		
	Min.	Max.
IC1-1300	18mm	820mm
IC1-2020	18mm	820mm

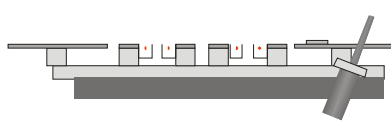
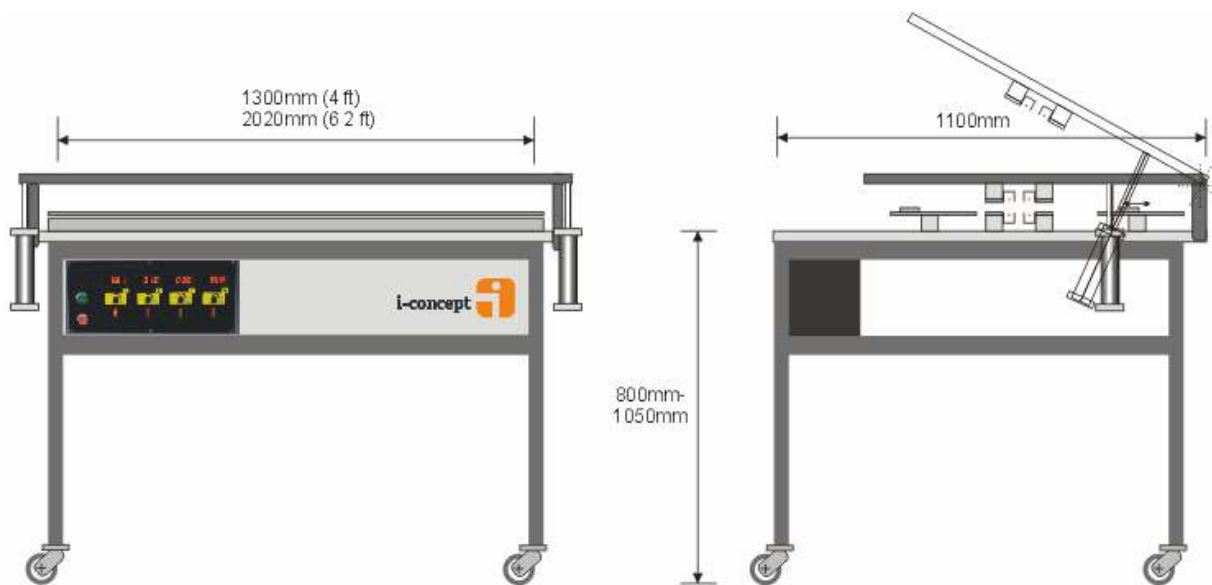
material	bending-temperature	Max thickness
ABS	100°C to 150°C	5mm
PC	150°C to 210°C	4mm
PMMA (Acryl)	120°C to 170°C	6mm
PS	100°C to 150°C	6mm
PVC-hard	110°C to 140°C	5mm
PET	120°C to 160°C	6mm

IC1-MAX Version

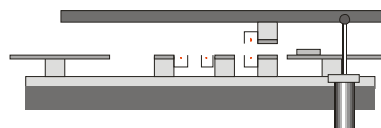
IC-2020mm MAX
(6,2 ft)



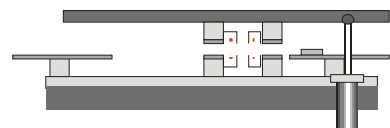
Timed heating and pneumatic lift topheating



opt. 1



opt. 2



opt. 3

	weight	Heatinglines	working length	Netz	Fuse
IC1-1300mm MAX	95kg	4	1300mm 4 ft	210V-230V 50/60Hz 1200W	Fuse 5x20 6,3AT
IC1-2020mm MAX	120kg	4	2020mm 6,7 ft	210V-230V 50/60Hz 3440W	Fuse 5x20 8AT

	IC1-1300mm MAX	IC1-2020mm MAX
Timer adjustable in 1 Sec. steps	x	x
Detachable end stop from 12 to 300 mm	x	x
Digital power display 0..100%	x	x
Temperature is infinitely adjustable	x	x
Heating wire is adjustable from - 8 to 20 mm	x	x
User manual	x	x

Work areal		
IC1-1300 MAX	1010mm	1300mm
IC1-2020 MAX	1010mm	2020mm

material	bending-temperature	Max thickness
ABS	100°C to 150°C	14mm
PC	150°C to 210°C	12mm
PMMA (Acryl)	120°C to 170°C	15mm
PS	100°C to 150°C	15mm
PVC-hard	110°C to 140°C	12mm
PET	120°C to 160°C	15mm

Europa	
UL-Version USA 110V 50/60 Hz	
SASO middle east	 220 V 13 A